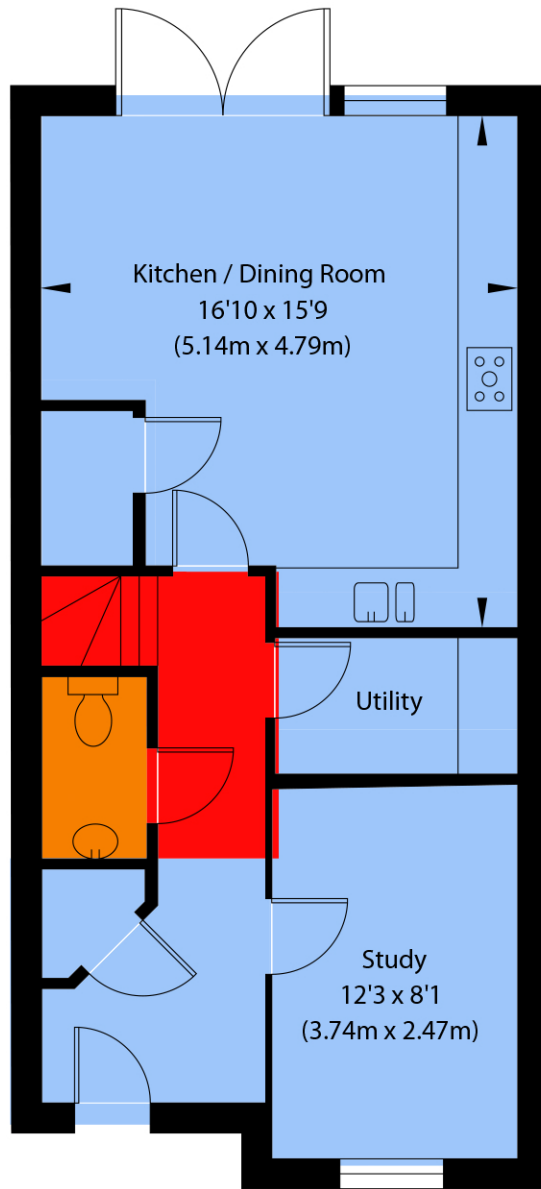
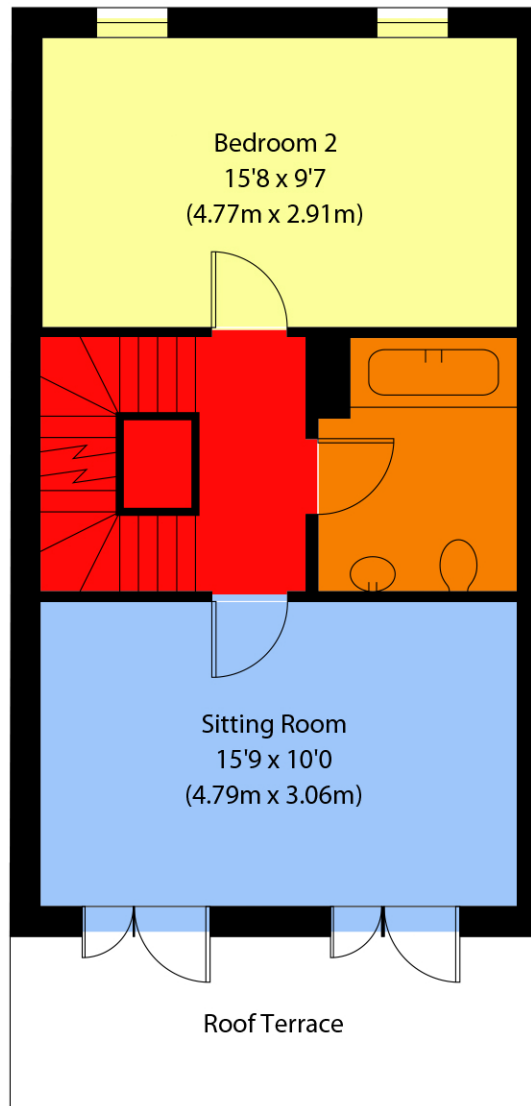


4 Bayldon Square, York, YO23 1PT

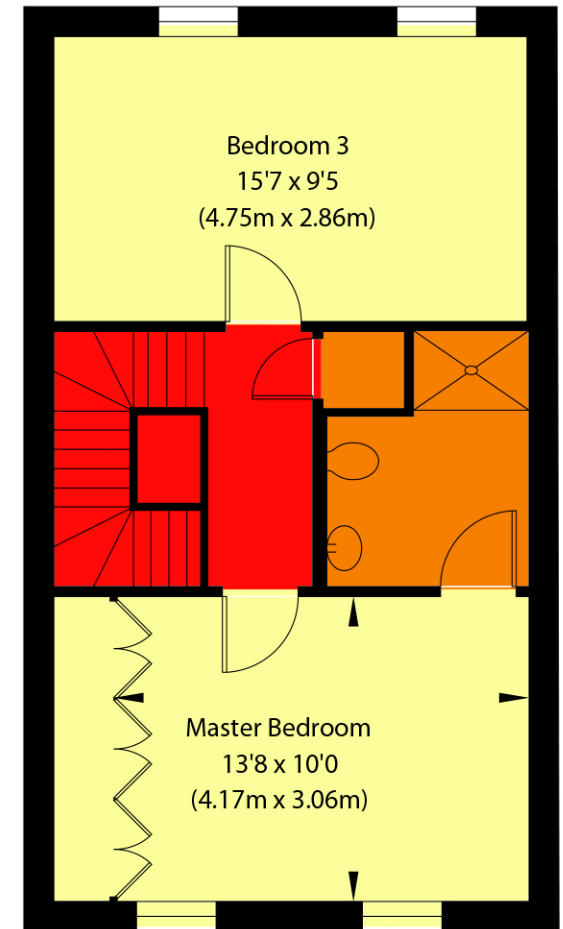
APPROXIMATE GROSS INTERNAL FLOOR AREA
1419 SQ FT / 131.85 SQ M



Ground Floor



First Floor



Second Floor

NOT TO SCALE - FOR ILLUSTRATIVE PURPOSES ONLY
All Measurements and fixtures including doors and windows
are approximate and should be independently verified
www.exposurepropertymarketing.com © 2019